

THE DREAM KEEPER

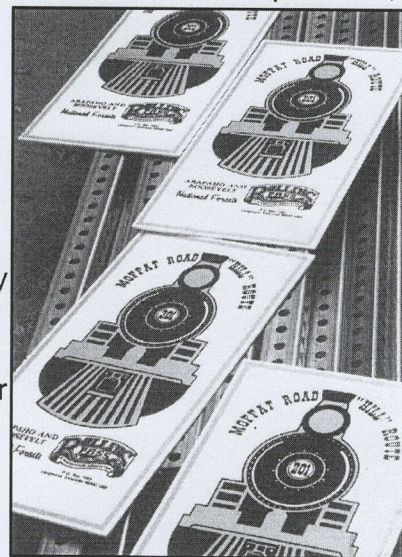
FROM THE PRESIDENT

JANUARY 2001

1. Welcome to the new year. I don't know where the time has gone but I do want to wish everyone the Best for the Millennium. Much has happened since our last Dreamkeeper, and I apologize for not having the time to prepare. Following the August RPRC picnic, in September I participated in the Grand County Autumn Heritage Activities. This was a four day event sponsored by the Winter Park/Fraser Valley Chamber of Commerce presenting the history of Grand County to participants. It started with Prehistoric Peoples and an Archaeological Site visit. RPRC member Earl Salter presented his multimedia program on "The Hill Route, Dave Moffat and the Moffat Road". Next were lectures on the Ute Indians and Mountain Men. I accompanied a group up the "Hill Route" to stop at points of interest and talk about the actual Moffat Road. Following presentations on Stage Coach routes and History of Skiing, John Fielder, photographer, presented slides of the changes in Colorado's landscape over the last 100 years. It was an outstanding series of presentations.

2. At the Winter Park Chamber of Commerce I noted the Colorado State Highway Department had photographs and explanations of the modifications going up Berthoud Pass but nothing on the Westside going down. I wrote RPRC member Don Kirkpatrick at the State Highway Department of my concern for the entrance to Rollins Pass. A short time later the Highway Department held a meeting in Grand County concerning the modifications on the west, or descending, Berthoud Pass. As a result of the meeting I can state we do not have to worry about the entrance to the Pass. They have noted, and have plans for, the Pass entrance.

3. While accompanying the group up the Pass to talk at points of interest, it was noted a number of signs on our Auto Tour were missing. Don Neuman, of Grand Adventures, asked if the signs could be replaced.. Don runs snowmobiles up the Pass and volunteered to donate toward replacing the signs. He will even install the signs on the Westside. This started quite a project. The original sign maker is out of business. Artwork was developed locally but the first material for the signs was inadequate. I finally contracted with a firm in Akron, Ohio to make the signs, and purchased breakaway signposts in Denver. Total cost has amounted to \$885.50. The signs are white reflective material with the train logo (from our decal) airbrushed onto one-eighth aluminum. (See photo) Does anyone care to donate toward the cost of the signs? If you do, send in your tax deductible contribution. Next July we will replace missing signs on the east side. I could use volunteers for this effort. Send me your name and we will coordinate the effort. An interesting story is that a woman walked into the Boulder Ranger Office with an

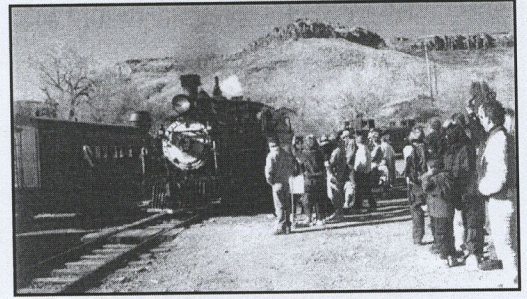


Rollins Pass Restoration Association
P.O. Box 1082 • Longmont, Colorado • 80502-1082

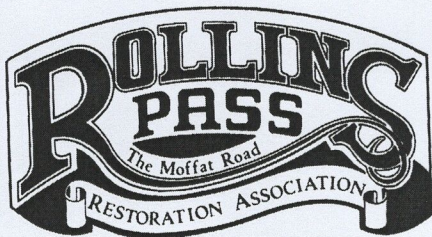
original wooden sign from the Auto Tour. She stated that she was 11 years old in 1956 when her father stopped the car and stole the sign. He recently passed away and she felt the sign should be returned. It is on the wall in the Boulder Forest Service Office. I wonder who has the other missing signs?

4. The Railroad Museum in Golden went all out for Christmas. Hundreds visited to ride the train and Galloping Goose and let children visit Santa. It was a great time. (See photo)

5. For the adventurous, go to Winter Park and ride a snowmobile up the pass! The snow is great! Grand Adventures has guides; experienced riders can go on their own. Contact Don Neuman at 1/800-726-9247 for information.



Dan E. Straight
President



P.O. Box 1082
Longmont, Colorado 80502-1082